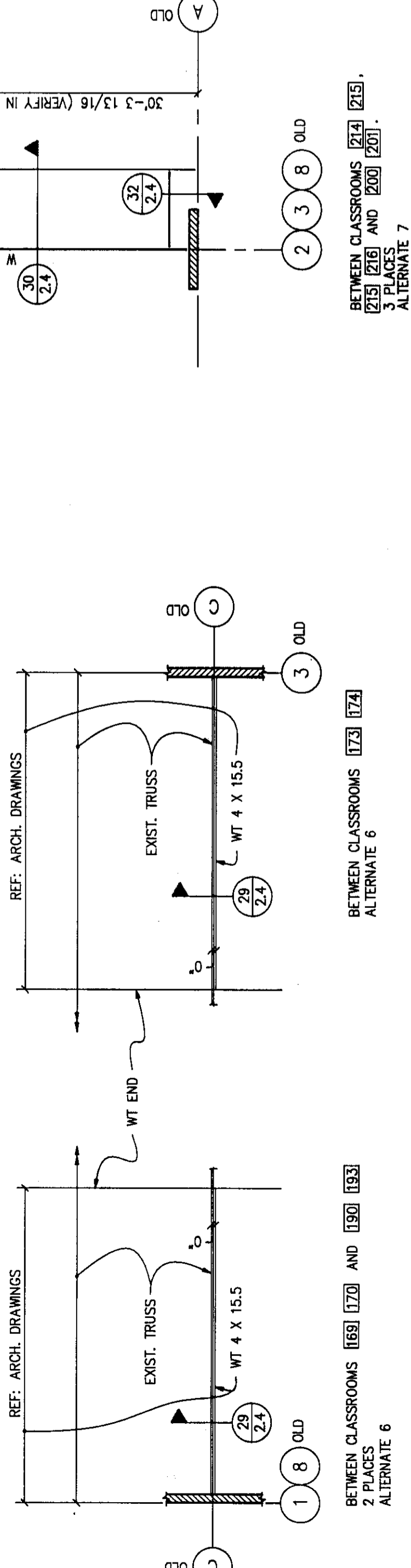


ROOF FRAMING PLANS -- NORTH POD
1/8" = 1'-0"

ROOF FRAMING PLAN -- SOUTH POD
1/8" = 1'-0"

THIS RECORD DRAWING HAS BEEN PREPARED BY THE ARCHITECT UPON INFORMATION FURNISHED BY THE CONTRACTOR. THE ARCHITECT HAS BELIEVED TO BE REASONABLE AND ACCURATE. THE ARCHITECT'S DESIGN PROFESSIONAL CANNOT BE HELD RESPONSIBLE FOR THE CONTRACTOR'S OMISSIONS OR FOR THE CONTRACTOR'S INTERPRETATION OF THIS DRAWING WHICH MAY HAVE BEEN MADE BY THE CONTRACTOR. THE CONTRACTOR IS ADVISED TO OBTAIN NECESSARY PERMITS AND TO VERIFY THE ACCURACY OF THIS DRAWING BEFORE APPLYING IT FOR ANY PURPOSE.



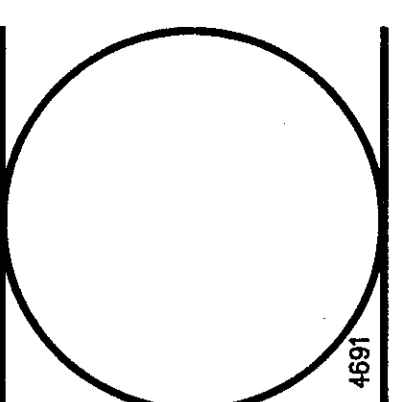
BETWEEN CLASSROOMS 620 (2B) AND 620 (2C) 2 PLACES ALTERNATE 7

BETWEEN CLASSROOMS 122 (7A) AND 122 (7B) 2 PLACES ALTERNATE 6

BETWEEN CLASSROOMS 160 (7D) AND 160 (7E) 2 PLACES ALTERNATE 6

POUDRE SCHOOL DISTRICT R-1
ADDITON & REMODEL
FT. COLLINS, COLORADO

RUSSELL M. MILLER
CONSULTING ENGINEERS
THIRD FLOOR
400 N. 68TH
FORT COLLINS, CO 80504



RBB
RBB ENGINEERS, ARCHITECTS, INC.
1000 W. WASHINGTON
FORT COLLINS, CO 80501

JOB NUMBER
9119
DRAWN
CB / L6
CHECKED
RPM / GAG
ISSUE
10/07/92
REVISIONS
AS BUILTS

SHEET NAME
ROOF FRAMING
PLANS
SHEET NUMBER
222

222